

Discharge Elbow

A hydrant discharge elbow is for use on pump discharge valves, or suction inlets to minimize hose kinking.



Part #	Size	Finish
ELBOW45RB25	2½" F SW NST x 2½" M NST	Rough Brass

Gauge Snubber

The gauge snubber / filter helps to steady the needle on the gauge in the existence of gas or liquid that may cause variations in your readings.



Part #	Size	Configuration
GAUGESNUBBER	1/4" F NPT x 1/4" M NPT	Hexagon Pattern

3-Way Bleeder Valve

The bottom port is known as the common port. The standard handle has 360 degree rotation and lies over the open port. When the handle is rotated 90 degrees from either port, flow is shut off to both ports.



Part #	Size	Max Pressure
PITOTBLEED3	1/4" F NPT x 1/4" F NPT x 1/4" M NPT	500 PSI

Cap Gauge

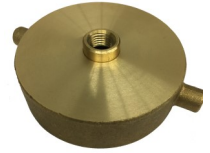
A cap gauge comes equipped with a hydrant cap, a liquid filled gauge, and a 3-way bleeder valve. These units are used to test static pressure (non-flowing).



Part #	Size	Configuration
CAPGAUGE25-100	2½" F NST	100 PSI
CAPGAUGE25-200	2½" F NST	200 PSI
CAPGAUGE25-300	2½" F NST	300 PSI

Hydrant Cap

These caps have a ¼" outlet for use with pressure gauges that also have a ¼" NPT connection.



Part #	Size	Finish
HYDCAP	2½" F NST x ¼" F NPT	Rough Brass

Line Gauge

A line gauge is used to test static pressure in fire hoses or fire hose nozzles. They're also designed for standpipe use. NOT intended to flow test fire hydrants.



Part #	Size	Finish
LINEGAUGE25-ST	2½" F NST x 2¼" Smooth Bore	Aluminum

Hydrant Flow Gauge

These handy units bolt directly onto the 2½" outlet of a fire hydrant to accurately measure flow. A 2½" liquid filled gauge is equipped with this unit.



Part #	Size	Configuration
HYDFLOW25	2½" Gauge Face	100 PSI

Hydrant Flow Nozzle

Hydrant flow nozzles straighten the stream of water at the hydrant port to help you get the most accurate pitot readings possible.



Part #	Size	Finish
HYDNOZZLE	2½" F NST x 2¼" Smooth Bore	Polished Chrome