

## Flush Mount FDC Inlet

Designed to provide supplemental water to a building's fire protection system. These units feature a body that's typically concealed behind a wall with only the plate, snoots, and plugs exposed.

250 GPM per inlet; 250 PSI max operating pressure

U/L Listed, FDNY Approved. Contact us for current approvals.

- **2-way standard equipment:** Units are equipped with a brass clappered concealed FDC body w/ 3" F NPT threaded inlets, wall plate, 3" F NPT x 3" F swivel NYFD snoots, and 3" iron plugs. The plugs are painted either red, yellow, or green, to correspond with the system type per NYC code requirements.
- **Optional Sillcock:** Features an extended plate with a 1 1/8" hole and a 3/4" FNPT x 3/4" GHT Sillcock.



120NYFD3RBA

Part #	Type	Size & Configuration	Outlet Type	Outlet Location	A	B	C
120NYFD3	2-Way	4" x 3" x 3"	Female NPT	Back	11 13/16"	7 1/4"	7 5/8"
121NYFD3	2-Way	4" x 3" x 3"	Female NPT	Bottom	11 13/16"	6 1/4"	7 5/8"
122NYFD3	2-Way	4" x 3" x 3"	Female NPT	Top	11 13/16"	6 1/4"	7 5/8"
123NYFD3	2-Way	4" x 3" x 3"	Groove	Back	11 13/16"	7 13/16"	7 5/8"
124NYFD3	2-Way	4" x 3" x 3"	Groove	Bottom	11 13/16"	6 1/4"	7 5/8"
125NYFD3	2-Way	4" x 3" x 3"	Groove	Top	11 13/16"	6 1/4"	7 5/8"
126NYFD3	2-Way	6" x 3" x 3"	Female NPT	Back	11 13/16"	8 1/4"	7 5/8"
127NYFD3	2-Way	6" x 3" x 3"	Female NPT	Bottom	11 13/16"	7 5/16"	7 5/8"
128NYFD3	2-Way	6" x 3" x 3"	Female NPT	Top	11 13/16"	7 5/16"	7 5/8"
126NYFD33	2-Way	6" x 3" x 3"	Groove	Back	11 13/16"	8 1/4"	7 5/8"
127NYFD33	2-Way	6" x 3" x 3"	Groove	Bottom	11 13/16"	7 5/16"	7 5/8"
128NYFD33	2-Way	6" x 3" x 3"	Groove	Top	11 13/16"	7 5/16"	7 5/8"

### Specify Finish:

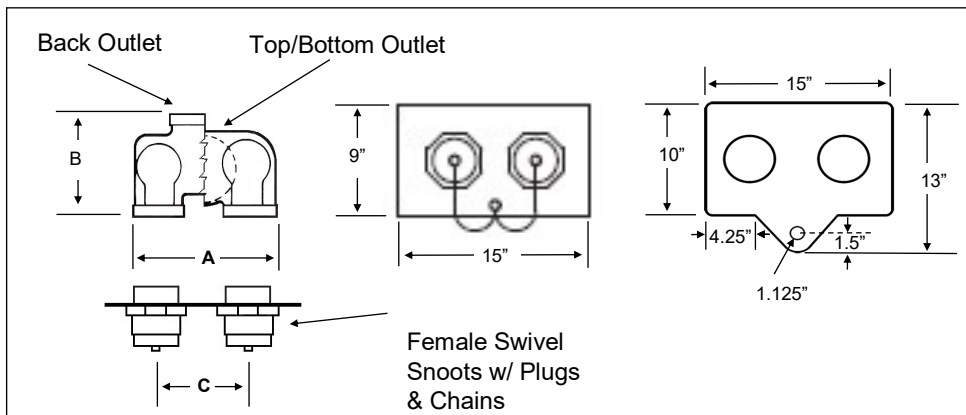
- RB Rough Brass
- PB Polished Brass
- PC Polished Chrome

### Specify Wall Plate Lettering:

- A Auto Spkr
- S Standpipe
- SA Standpipe & Auto Spkr
- DS Dry Standpipe

### (Optional) Specify Sillcock:

- SC Plate with Sillcock



126NYFD33PCSASC