



AllGroove™ MANIFOLD BODIES



Our revolutionary AllGroove™ manifold bodies feature grooved connections on both the inlet and outlet side saving valuable time and money upon installation.

Standard on all of our 3-, 4-, and 6-way flush mounted FDCs and test headers.

SAVE TIME. SAVE MONEY.

- Allows for much quicker connections than traditional NPT thread when installing FDCs.
- Constructed of schedule 40 steel for superior strength.
- Features multiple 1/2" tapped and plugged drain holes.
- Designed for 300 PSI of pressure.
- Available in multiple configurations.

OPTIONAL ACCESSORIES

Wall Plates



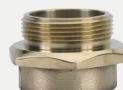
Clappered
Snoots



Plugs



Hex
Adapters



Caps



Gate Valves

